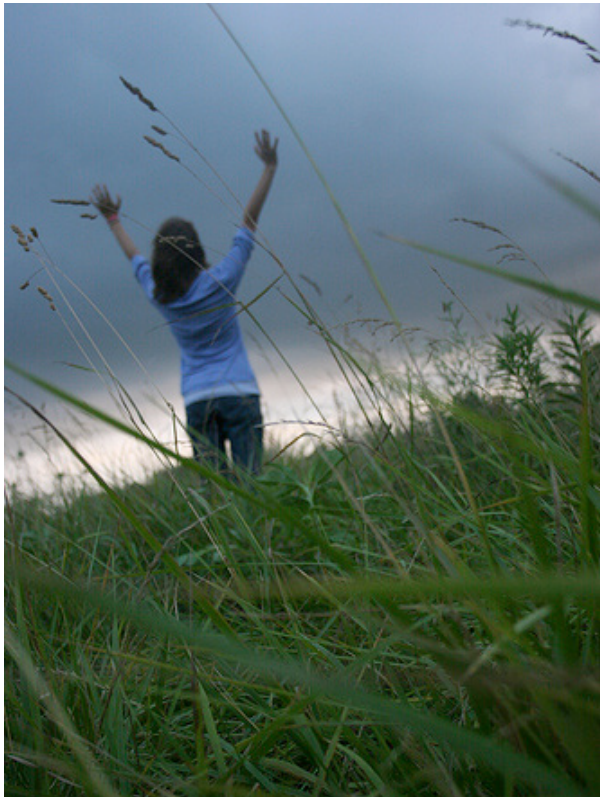


DUKE
UNIVERSITY
CHAPEL

Service of Worship

Eleventh Sunday after Pentecost
August 16, 2009
Eleven o'clock in the morning

∞ *Keeping the heart of the University listening to the heart of God* ∞



"My Praise Is a Weapon," by flickr user Salt of the Earth, 2009

The letter to the Ephesians wakes followers of Jesus out of their complacency and conformity to the world. In today's scripture lesson, believers are encouraged to live distinctive lives of faith and wisdom, in contrast to the world around them. The primary way to do this is identified as worship. In the gospel lesson from John, the lectionary passage lingers on Jesus as the bread of life, and his eucharistic emphasis that his body and blood are the food for eternal life.

*The congregation is asked to remain silent
during the prelude as a time of prayer and meditation.*

GATHERING

CARILLON

PRELUDE

Concerto in A Minor

(after Vivaldi, Op. 3, No. 8), BWV 593

Johann Sebastian Bach

(1685-1750)

GREETING

*PROCESSIONAL HYMN 79

Holy God, We Praise Thy Name

GROSSER GOTT

*PRAYER OF CONFESSION AND WORDS OF ASSURANCE (*in unison*)

Most merciful God, we confess that we have sinned against you in thought, word, and deed, by what we have done, and by what we have left undone. We have not loved you with our whole heart; we have not loved our neighbors as ourselves. We are truly sorry and we humbly repent. For the sake of your Son Jesus Christ, have mercy on us and forgive us; that we may delight in your will, and walk in your ways to the glory of your name. Amen.

The minister speaks words of assurance.

*PEACE

(All exchange signs and words of God's peace.)

PROCLAMATION

PRAYER FOR ILLUMINATION (*in unison*)

Lord of heaven and earth, as Jesus taught his disciples to be persistent in prayer, give us patience and courage as we hear your word to never to lose hope, but always to bring our prayers before you; through Jesus Christ our Lord. Amen.

FIRST LESSON—Ephesians 5:15-20 (*NT page 183 in the pew Bible*)

Lector: This is the word of the Lord.

People: Thanks be to God.

*GRADUAL HYMN 72 (*soloist will lead, repeat as necessary*)

Gloria, Gloria

GLORIA CANON

(All turn to face the Gospel Procession.)

*GOSPEL LESSON—John 6:51-58 (*NT page 93*)

Lector: This is the word of the Lord.

People: Thanks be to God.

*GRADUAL HYMN 72 (*soloist will lead, repeat as necessary*)
Gloria, Gloria

GLORIA CANON

SERMON—Making the Most of It

RESPONSE

CALL TO PRAYER

Minister: The Lord be with you.

People: And also with you.

Minister: Let us pray.

PRAYERS OF THE PEOPLE

(The congregation responds to each petition: "Hear our prayer.")

OFFERTORY ANTHEM

Qui sedes ad dexteram (from *Gloria*)

Antonio Vivaldi
(1678-1741)

Qui sedes ad dexteram Patris, miserere nobis.

Thou that sittest at the right hand of God the Father,
have mercy upon us.

*DOXOLOGY

LASST UNS ERFREUEN

Praise God from whom all blessings flow;

Praise God, all creatures here below; Alleluia, Alleluia!

Praise God above, ye heavenly host,

Praise Father, Son, and Holy Ghost. Alleluia, Alleluia,

Alleluia, Alleluia, Alleluia.

THANKSGIVING AND COMMUNION

This morning we lift up Duke parents, especially parents of incoming first-year students, as they face this transition in the life of their child. The ushers bring a high school graduation photo to the altar.

We lift up the Durham Police Department and its mission to partner with citizens in safeguarding the community, especially through the efforts of Partners Against Crime in each district. The ushers bring forward a map of the five police districts in the city of Durham.

*THE GREAT THANKSGIVING

(Musical Setting B, on page 18 of the hymnal. The leader will sing each phrase of the responses, and the congregation repeats.)

*THE LORD'S PRAYER (*number 895 in the hymnal, in unison*)

SHARING OF THE BREAD AND WINE

All those who have become members of Christ's body through baptism and seek to be united with God and at peace with their neighbor are invited to receive communion. Wine is used for communion. The tradition as understood at Duke Chapel is that the Holy Spirit makes Christ fully present in

both the bread and the wine. If you receive only the bread, be assured that you are nonetheless in full communion with Christ and the Church.

If you would like to receive individual anointing with oil and prayers for healing, ministers will be in the Memorial Chapel during communion.

MUSIC DURING DISTRIBUTION

HYMN 618 (*sung by all*)

Let Us Break Bread Together

LET US BREAK BREAD

COMMUNION ANTHEM

Panis angelicus

César Franck
(1822-1890)

*Panis angelicus fit panis hominum.
Dat panis coelicus figuris terminum.
O res mirabilis! Manducat Dominum
Pauper, servus et humilis.*

*Te trina Deitas, unaque, poscimus,
Sic nos tu visita sicut te colimus;
Per tuas semitas duc nos quo tendimus,
Ad lucem quam inhabitas. Amen.*

The bread of the angels becomes the bread of man;
This bread of heaven ends all prefigurations:
O wondrous thing!
A poor and humble servant consumes the Lord.

Of you, threefold and one God, we ask:
Come to visit us as we worship you;
lead us on your paths to where we want to go:
to the light in which you dwell. Amen.

*PRAYER AFTER COMMUNION

SENDING FORTH

*BENEDICTION

*RECESSIONAL HYMN 102

Now Thank We All Our God

NUN DANKET

ORGAN POSTLUDE

Toccata on NUN DANKET

David Arcus
(b.1959)

CARILLON

**All who are able may stand.*

MINISTRY OF WORSHIP

Presiding Ministers	The Rev. Dr. Samuel Wells The Rev. Abby Kocher
Preacher	The Rev. Dr. L. Roger Owens <i>Co-Pastor, Duke Memorial United Methodist Church, Durham, NC</i>
Lectors	Mr. David Eck <i>Member, Congregation at Duke Chapel</i> Ms. Chamberlyn Marks <i>Divinity '11, Summer Ministry Intern, Congregation at Duke Chapel</i>
Soloist	Ms. Erica Dunkle
Organist	Dr. David Arcus
Ministers of Anointing	The Rev. Meghan Feldmeyer The Rev. Abby Kocher The Rev. Bruce Puckett
Head Ushers	Dr. James Ferguson and Ms. Charlotte Harrison
Carillonneur	Mr. J. Samuel Hammond

ABOUT TODAY'S GUEST PREACHER

This morning we welcome the Rev. Dr. L. Roger Owens as our guest preacher. The Rev. Owens is the co-pastor, with his wife, the Rev. Ginger Thomas, of Duke Memorial United Methodist Church, Durham, NC. They are the parents of two sons, Simeon, who is five, and Silas, who is four. Roger has a M.Div. from Duke Divinity School. He completed his Ph.D. at Duke in theological ethics in 2006. He is an ordained elder in the United Methodist Church. Before coming to Duke Memorial last year, Roger and Ginger were the co-pastors of Trinity United Methodist Church, just outside of Louisburg, NC. Roger's work has appeared in *The Christian Century*, as well as a number of other theological journals. He has two books coming out in the fall: *The Shape of Participation: a Theology of Church Practices*, and *Wendell Berry and Religion: Heaven's Earthly Life*, edited with Joel J. Shuman.

CHAPEL ANNOUNCEMENTS

TODAY'S FLOWERS—The floral arrangements in the chancel and in the crypt are given in loving memory of Terry Sanford's birthday by his family.

TODAY'S OFFERING—All of today's cash offerings and undesignated checks will be used to support the Chapel's PathWays program that offers undergraduates and recent graduates varied opportunities to discern God's call for their lives. Our extended Lilly grant requires a 50% match from the Chapel.

TODAY'S SOLOIST—Erica Dunkle is a member of the Duke Choral Vespers ensemble which sings on Thursday evenings during the academic year. She has also sung in the Vocal Arts Ensemble and the Choral Society of Durham and has been an alto soloist in numerous choral performances, most recently in the Duke choirs' performance of Handel's *Israel in Egypt* last spring, and in Haydn's *Mass in time of War* in Vienna this summer. She is beginning her final year of a Masters in Social Work at UNC.

NEXT SUNDAY AT DUKE CHAPEL—This week the incoming first-year students are arriving on Duke's campus for their orientation. Next Sunday the Chapel will welcome the new students who will make their home here, and it will also mark the return of the Chapel choir.

PARKING AT DUKE CHAPEL—Do you like to attend Chapel events on evenings and weekends but do not like the hassle and cost of parking on campus? Duke Parking and Transportation services offers a Night permit for \$16 annually, which allows you to park on campus after 5:00 p.m. and on weekends for free. The permit is renewed annually in August. Please contact Parking at 684-PARK for more information.

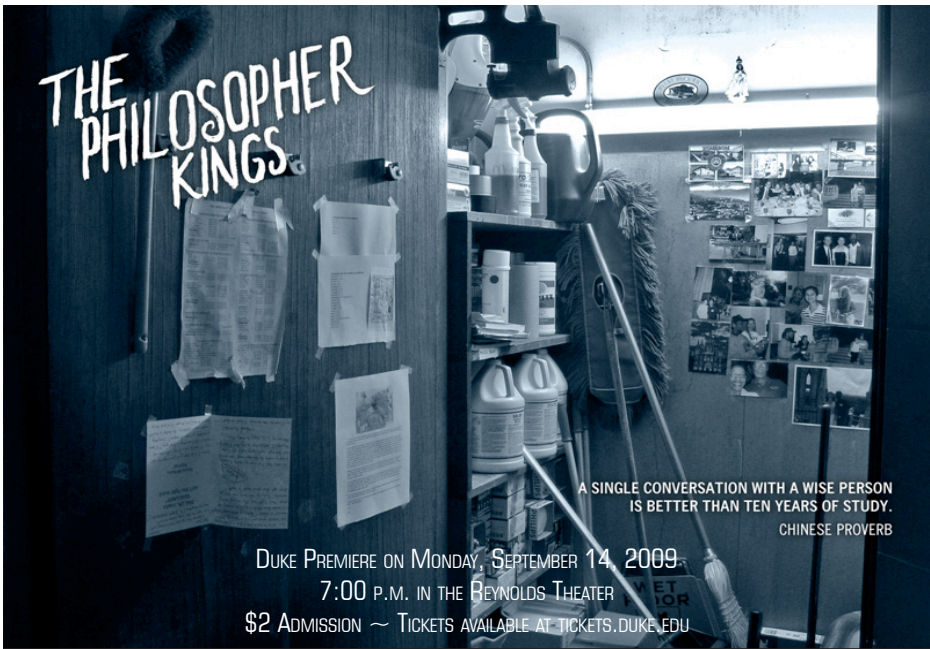
THE CONGREGATION AT DUKE UNIVERSITY CHAPEL
919-684-3917 • www.congregation.chapel.duke.edu

The following Congregation opportunities are open to all.

HABITAT HOUSE—The Congregation at Duke Chapel is partnering with Duke students this fall to build a Habitat for Humanity house. Construction will begin on September 12th and will continue on each Saturday until mid December. For more information, or to volunteer for a Saturday morning or afternoon shift, please visit <http://www2.mysignup.com/dukehabitat>. Representatives will be in front of the Chapel today after worship if you'd like to learn more or to volunteer. No experience is required, everyone is invited, so please join us.

CHILDREN'S MINISTRY—Godly Play meets each Sunday at 9:45 a.m. Children entering third grade or younger will meet in the crypt. Those in the fourth and fifth grades will be meeting in a new location which is the York Reading Room on the second floor of Duke Divinity School. For more information, please contact Elizabeth Clift at eac17@duke.edu.

YOUTH MINISTRY—Sunday school classes for youth (grades 6-12) are held in the Divinity Student Lounge at 9:45 a.m., and Youth Fellowship occurs at 5:00 p.m. each Sunday in the Chapel basement. For more information, contact Bruce Puckett, Assistant Pastor, at bruce.puckett@duke.edu.



A SINGLE CONVERSATION WITH A WISE PERSON
IS BETTER THAN TEN YEARS OF STUDY.
CHINESE PROVERB

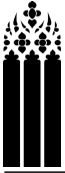
DUKE PREMIERE ON MONDAY, SEPTEMBER 14, 2009
7:00 P.M. IN THE REYNOLDS THEATER
\$2 ADMISSION ~ TICKETS AVAILABLE AT TICKETS.DUKE.EDU

FEATURING CHAPEL HOUSEKEEPER OSCAR DANTZLER

In early 2009 two filmmakers chose Duke Chapel's beloved housekeeper Oscar Dantzler along with six other housekeepers from other universities to feature in their documentary, *The Philosopher Kings*. In June, the movie debuted at the Silver Docs film festival in Maryland, and now is being screened at the campuses where the featured custodians work and other film festivals. Director Patrick Shen and co-producer Greg Bennick visited Duke several times, following Oscar during his workday on campus, and even accompanied him a fishing trip with him after work.

In search of wisdom found in unlikely places, *The Philosopher Kings* takes us on a journey through the halls of the most prestigious colleges and universities in America to learn from the staff members who see it all and have been through it all: the custodians. This thought-provoking, feature-length documentary interweaves the untold stories of triumph and tragedy from the members of society who are often disregarded and ignored, and seeks out the kind of wisdom that gets you through the day and the lessons one learns from surviving hard times, lost loves, and shattered dreams. From the producers of the multiple-award winning *Flight from Death*, *The Philosopher Kings* gives us the opportunity to learn from eight incredible individuals whom we would never have otherwise taken a moment out of our day to acknowledge.

For more information, visit www.philosopherkingsmovie.com.



DUKE UNIVERSITY CHAPEL

Duke Chapel is a grand building, suitable for hosting major events in the life of the University and its members; it acts as a moderator for the diversity of religious identity and expression on campus; and it is a Christian church of an unusually inter-denominational character, with a tradition of stirring music, preaching, and liturgy. We welcome you to our life of worship, learning, dialogue, and service.

www.chapel.duke.edu • Box 90974, Durham, NC 27708 • 919-684-2572

FOR WORSHIPERS & VISITORS

† Prayer requests may be placed in the prayer box located by the Memorial Chapel.

† For a tour of Duke Chapel, meet today's docent near the front steps of the Chapel following the service.

† Hearing assist units and a Braille hymnal are available at the attendant's desk at the entry way of the Chapel. See the Chapel attendant if you would like to use one of our large-print Bibles or hymnals for the worship service this morning.

FOR FAMILIES & CHILDREN

† Children 4 and younger are welcome to visit the nursery (capacity limited), located in the Chapel basement, beginning at 10:50 a.m. each week. Pagers are available for parents to keep with them during worship. Parents needing a place to feed, quiet, or change infants are also welcome.

† Activity Bags (for children 5 and under) and Liturgy Boxes (ages 5-8) are available at the rear of the Chapel to help children engage in worship. Please return after the service.

We invite you to consider joining the Congregation at Duke Chapel. The Congregation is an interdenominational church with a variety of vibrant ministries, including discipleship and spiritual formation (for children, youth, and adults), mission and outreach, and pastoral care. If you are interested in making Duke Chapel your home church, contact the Rev. Nancy Ferree-Clark at 684-3917. www.congregation.chapel.duke.edu

STAFF OF DUKE UNIVERSITY CHAPEL

The Rev. Dr. Samuel Wells

Dean of the Chapel

Student Ministry and Chapel Worship

The Rev. Meghan Feldmeyer

Director of Worship

Ms. Mollie Keel

Chapel Events Coordinator and Wedding Coordinator

Chapel Music

Dr. Rodney Wynkoop

Director of Chapel Music

Dr. Robert Parkins

University Organist

Dr. David Arcus

Chapel Organist and Associate University Organist

Dr. Allan Friedman

Assistant Conductor and Administrative Coordinator of Chapel Music

Mr. John Santoianni

Curator of Organs and Harpsichords

Mr. J. Samuel Hammond

University Carillonneur

Ms. Meredith Hawley

Administrative Secretary for Chapel Music

Community Engagement

The Rev. Gaston Warner

Director of University and Community Relations

The Rev. Abby Kocher

Community Minister

Ms. Mandie Sellars

Manager of Chapel Communications

Ms. Layne Baker

Visitor and University Relations Specialist

PathWays Program

The Rev. Keith Daniel

Director of Duke Chapel PathWays

Ms. Becky Smith

Staff Assistant to PathWays

Chapel Administration

Ms. Lucy Worth

Director of Development and Administration

Ms. Emily Wilson-Hauger

Staff Assistant to the Deans and Faith Council Coordinator

Ms. Lisa Moore

Accounting Specialist and Office Coordinator

Ms. Bonnie McWilliams

Staff Assistant to the Director of Development and Administration

Mr. Oscar Dantzler and Mr. William Earl

Housekeepers

Staff of the Congregation at Duke University Chapel

The Rev. Nancy Ferree-Clark

Senior Pastor

The Rev. Bruce Puckett

Assistant Pastor

Ms. Elizabeth Clift

Director of Children's Ministry