



*Honoring Nancy Ferree-Clark*

**Rebuilding Family Health Ministries'  
Leogane Clinic in Haiti:**

A partnership among the people of Haiti,  
The Congregation at Duke Chapel, & Duke University Chapel



**You are invited to help rebuild the second floor of a health clinic in Haiti for the many still in desperate need.**

## **BACKGROUND**

Duke University Chapel and The Congregation at Duke Chapel have for several years been the primary sponsors of the building and operations of the clinic run by Family Health Ministries (FHM) in Blanchard, Haiti. We are pleased that the clinic sustained virtually no damage from the January 2010 earthquake and that it continues to operate during this time of extraordinary need.

However, the FHM clinic in Leogane, at the earthquake's epicenter, is another story. Based on input from the people of Leogane, the clinic focuses on the health needs of women and children, with an emphasis on screening for and prevention of cervical cancer. **Haiti's infant mortality rate is very high, the worst in the Western Hemisphere, at 60 per 1000 births. (The rate in the US is 7 per 1000 births.)** FHM aims to improve these dreadful statistics through the services headquartered in the Leogane clinic, which provides prenatal care, deliveries, and FHM's cervical cancer prevention program. FHM hopes to have a pediatrician on staff by the end of 2010.

**This clinic marked a major step for the people of Leogane, providing free healthcare to indigent mothers.** After Hospital St. Croix closed in early 2008, families had to travel to Port-au-Prince or do without expert care. In March 2009, the cervical cancer prevention program moved to the Leogane clinic and served more than 3000 women.

## **TODAY**

FHM's current collaboration in Leogane with Dr. Delson Merisier, OB/GYN has included screening women for the human papilloma virus (HPV), the primary cause of cervical cancer, a curable disease in higher resource countries but one with devastating consequences for untreated women and their families. A local women's group helps FHM build and sustain healthy families throughout the community. The head of the women's group was killed in the earthquake, but the group continues despite this adversity.

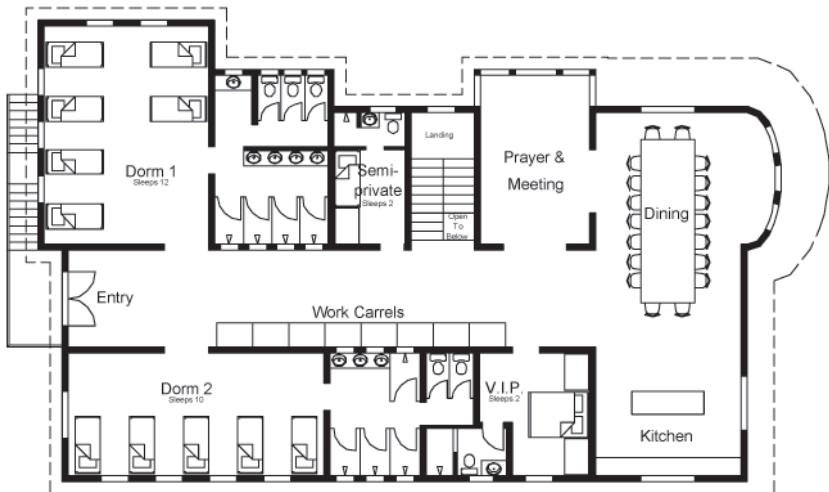
The first floor of the Leogane clinic opened in January 2009 and the second floor was nearing completion



when the earthquake struck in January 2010 (see cover graphic). The first floor sustained damage, but reopened in April. (See image at right).

The second floor of the Leogane clinic building - which collapsed during the quake, just after Dr. Delson Merisier and his wife, Diane, had delivered a baby on the first floor - was and is intended to serve as a guest house for visiting mission teams, such as those sponsored by The Congregation at Duke Chapel. **Until the second floor is rebuilt, the medical mission teams sent to Leogane by FHM will sleep on the open roof under mosquito netting, making this project especially urgent.**

Dr. Merisier is the only local Haitian physician operating the clinic, assisted by six other Haitian staffers. The plans are shown below. Construction using new earthquake-resistant materials ([www.innovida.com](http://www.innovida.com)) can begin immediately. Only one thing is needed, and we have it.



The post-earthquake cost is approximately \$80,000. As the Rev. Nancy Ferree-Clark prepares to move to Washington state, the leadership of the Chapel and the Congregation have decided there is no more fitting way to honor her contributions as former associate Chapel dean, and, for the last 18 years as the pastor of the Congregation, than to raise the funds for the second floor and name the guest house in Nancy's honor. Nancy was, and remains, a long-time supporter of Family Health Ministries.

## HOW YOU CAN HELP

A task force of Congregation and Chapel lay leaders has determined the need is clear and urgent and the funding is achievable. The need is so urgent, in fact, that the kick-off of our fundraising campaign is Sunday worship, June 13, 2010 and the finale is Sunday, August 15, 2010. **FHM anticipates the second floor can be rebuilt in a month's time using the new construction materials.** We are starting with a total commitment of \$20,000 from Duke Chapel's Easter offering and the campaign co-chairs, John Boswell and Lucy Worth.

**John and Lucy offer the following ways to look at the need and determine how you can help personally.**

- The daily operating cost of the clinic was \$275, pre-earthquake.
- The guest house will house 400-500 mission team members per year, including those sponsored by other agencies during times when FHM does not have a team on site. The guest house will support long term service opportunities as well as short term trips.
- The guest house will house up to 26 people at any time. That works out to \$3,077 per person.
- The meeting/prayer room can be named for a gift of \$10,000.
- The kitchen/dining room can be named for a gift of \$20,000.

There is, of course, no way to put a \$ on what Nancy means to each of us, but together we can honor her in this significant project.

## SUPPORT THIS PROJECT

We encourage your generous support of this project in Nancy's honor over and above your regular contributions to the Congregation and the Chapel. How to give:

Mail a check made payable to  
"Duke University Chapel" with "Haiti Clinic" in the memo line to:

Duke University Chapel  
Attn: Haiti Clinic  
Box 90974  
Durham, NC 27708

or

You can pledge or give via credit card online at:  
[www.gifts.duke.edu/chapel](http://www.gifts.duke.edu/chapel)

Put "Haiti Clinic" in the field marked "Designation Comments" and check the box next to "Chapel Development Fund"

You may also request Duke to notify Nancy that you have contributed.